

COVID-19 RESPONSE

FOR IMMEDIATE RELEASE:

April 8, 2020

City of Yucaipa

COVID-19 Response; Drive-up Collection

Saturday, April 11, 10AM – 1PM | Crafton Hills College

11711 Sand Canyon Rd, Yucaipa, 92399 | 909-797-2489 | www.yucaipa.org

The City of Yucaipa and the San Bernardino County Department of Public Health are hosting a COVID-19 Specimen Point of Collection for Yucaipa residents, Saturday, April 11, 10AM – 1PM at Crafton Hills College. No appointments are needed, all criteria must be met, and clients must remain in their vehicles.

To qualify, you must meet the three testing criteria:

- 1. Fever**
- 2. Shortness of breath**
- 3. Cough**

Residents who are experiencing these symptoms and believe they qualify for the specimen test should proceed to the collection area with their windows rolled up. The entrance to the collection area can only be accessed via westbound Yucaipa Blvd to northbound Sand Canyon. Vehicles attempting to enter via any other means will be turned away. Residents will be screened by San Bernardino County Department of Public Health officials prior to the collection. The drive-up only collection point will be open while supplies last. If you do not meet the specific criteria, you will not be tested and will be asked to exit the collection area. Thank you for your understanding.

Residents of San Bernardino County may call the COVID-19 hotline at (909) 387-3911 from Monday through Friday, from 9AM – 5PM for general information and resources about the virus. For more information, please visit www.yucaipa.org or call 909-797-2489. We also encourage residents to follow the City of Yucaipa for updates on Facebook and Instagram: @cityofyucaipa.

###



COVID-19 RESPONSE

SPECIMEN POINT OF COLLECTION



Saturday, April 11



10am-1pm: Drive-ups only while supplies last

NO APPOINTMENT NEEDED • CRITERIA BELOW MUST BE MET • CLIENTS MUST REMAIN IN VEHICLE



For Yucaipa Residents



909-797-2489



Crafton Hills College

11711 Sand Canyon Rd, Yucaipa, 92399



www.yucaipa.org

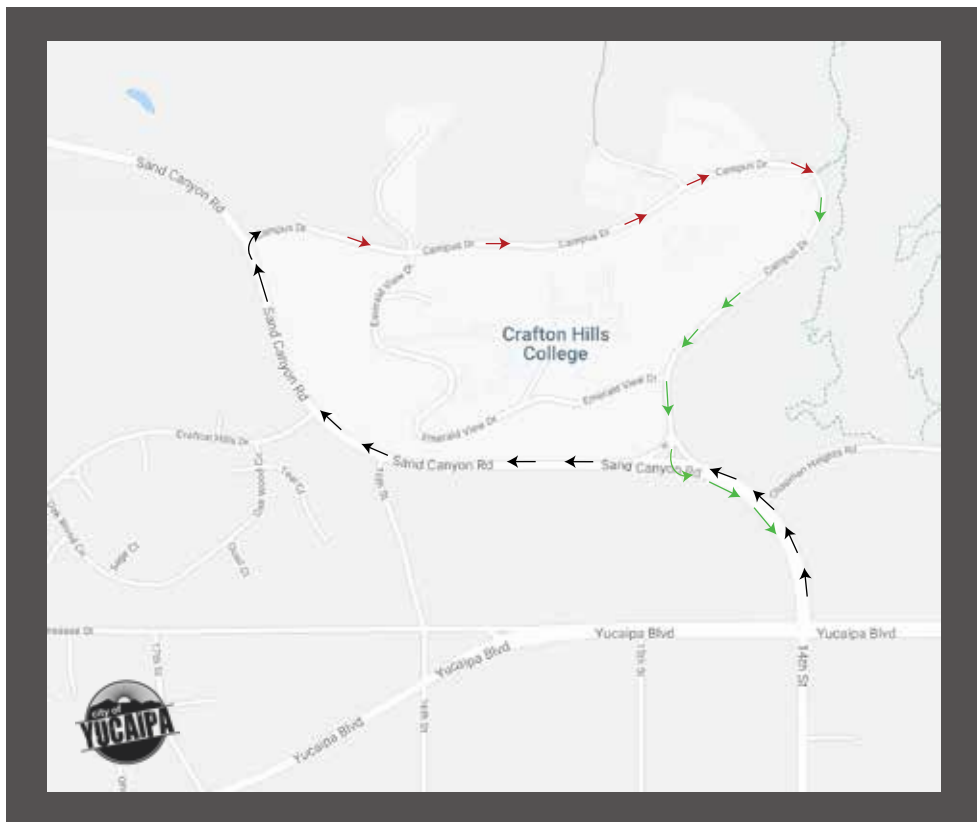
TO QUALIFY, YOU MUST MEET THE 3 TESTING CRITERIA:

1. FEVER 2. SHORTNESS OF BREATH 3. COUGH

IF YOU DO NOT MEET THE CRITERIA, YOU WILL BE ASKED TO EXIT.

SPECIMEN POINT OF COLLECTION MAP

FOR THOSE WHO MEET THE TESTING CRITERIA, PLEASE USE THIS MAP WHEN ARRIVING TO CRAFTON HILLS COLLEGE.



← Line to Enter

→ Exit Route